

Typical Features

- ◆ Wide input voltage range 2:1
- ◆ Efficiency 88% (Typ.)
- ◆ Low standby power consumption
- ◆ Operating Temperature from -40°C to +105°C
- ◆ High isolation voltage 3000VDC(input-output) & 2100VDC(input-case)
- ◆ Input under voltage protection, output over current, over voltage, over temp. & short circuit protections
- ◆ Standard 1/2 brick size

ZBD250-280S15C is a high-performance DC-DC modular converter with rated input voltage 280VDC (full range from 185 to 425VDC), regulated single output 15V/250W without minimum load limit. It has the advantages of high isolation voltage, Max operating temperature up to 105°C, with input under-voltage protection, output over-current, over-voltage, over-temperature and short circuit protections, input ON/OFF control, output voltage distal end compensation and output voltage Trim, etc.

Typical Product List							
Part No.	Input voltage range (VDC)	Output Power (W)	Output Voltage (VDC)	Output Current (A)	Ripple & Noise (mVp-p)	Full load Efficiency (%) Min/Typ.	Remark
ZBD250-280S15CC	185-425	250	15	16.6	150	86/88	Positive logic Standard
ZBD250-280S15CN							Negative logic Standard
ZBD250-280S15CC-H							Positive logic With heat sink
ZBD250-280S15CN-H							Negative logic With heat sink

Input Specifications					
Items	Test conditions	Min.	Typ.	Max.	Unit
Input current Max	Input 185VDC, 100% load	--	--	2	A
No-load current	Rated input voltage	--	--	20	mA
Input inrush voltage (1sec. max.)	The unit could be permanently broken over this voltage	-0.7	--	430	VDC
Start-up voltage		--	--	175	
Under-voltage protection	With No load (the over current protection could work in advance at full load)	--	--	170	
ON/OFF control (CNT)	Positive logic: CNT no connection or connected to 3.5-15V to turn on, connected to 0-1.2V to turn off the converter.				Reference voltage -Vin
	Negative logic: CNT no connection or connected to 3.5-15V to turn off, connected to 0-1.2V voltage to turn on the converter.				

Output Specifications

Items	Test conditions	Min.	Typ.	Max.	Unit
Output voltage accuracy	Nominal input voltage, 0%-100% load	--	±0.2	±1.0	%
Line regulation	Full load, input voltage from low to high	--	±0.1	±0.2	
Load regulation	Nominal input voltage, 10%-100% load	--	±0.1	±0.2	
Transient recovery time	25% load step change (step rate 1A/50uS)	--	200	250	uS
Transient response deviation		-5	--	5	%
Temperature drift coefficient	Full load	-0.02	--	+0.02	%/°C
Ripple & Noise	20M bandwidth, test with capacitor ≥220uF	--	100	150	mVp-p
Output voltage adjustment (TRIM)		-20	--	+10	%
Distal end compensation (Sense)		--	--	105	%
Over temperature protection	Maximum temperature of the Metal base	105	115	125	°C
Over voltage protection		125	--	140	%
Over current protection		18.2	--	23.2	A
Short circuit protection		Hiccup, continuous, self-recovery			

General Specifications

Items	Test conditions		Min.	Typ.	Max.	Unit
Isolation voltage	I/P-O/P	Test 1min, leakage current <3mA	3000	--	--	VDC
	I/P-Case	Test 1min, leakage current <3mA	2100	--	--	VDC
	O/P-Case	Test 1min, leakage current <3mA	500	--	--	VDC
Insulation resistance	I/P-O/P	@ 500VDC	100	--	--	MΩ
Switching frequency			--	420	--	KHz
MTBF			150	--	--	K hours

Environmental characteristics

Items	Test conditions	Min.	Typ.	Max.	Unit
Operating temperature	Refer to the temperature derating graph	-40	--	+105	°C
Storage humidity	No condensing	5	--	95	%RH
Storage temperature		-40	--	+125	°C
Pin soldering temperature	1.5mm from the case, soldering time <1.5S	--	--	+350	
Cooling requirement		EN60068-2-1			
Dry and heat requirement		EN60068-2-2			
Moisture and heat requirement		EN60068-2-30			
Shock and vibration		IEC/EN 61373 C1/Body Mounted Class B			

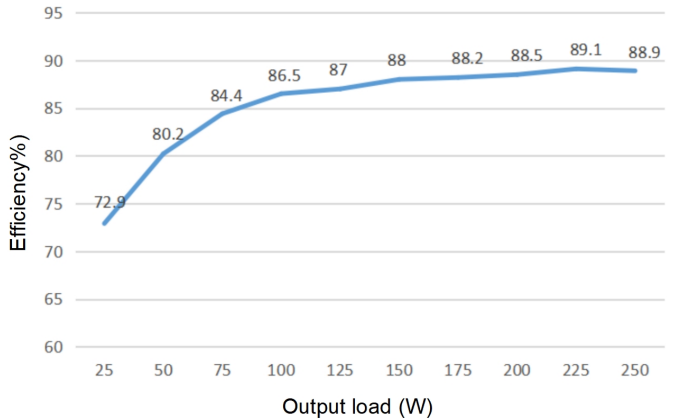
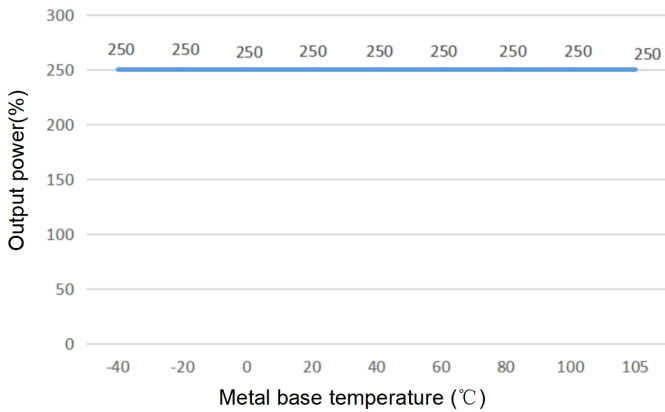
EMC Performances (EN50155)

EMI	CE	EN50121-3-2	150kHz-500kHz 79dBuV	
		EN55016-2-1	500kHz-30MHz 73dBuV	
	RE	EN50121-3-2	30MHz-230MHz 40dBuV/m at 10m	
		EN55016-2-1	230MHz-1GHz 47dBuV/m at 10m	
EMS	ESD	IEC/EN61000-4-2/GB/T 17626.2-2006	Contact ±6KV/Air ±8KV	perf. Criteria A
	RS	IEC/EN61000-4-3/GB/T 17626.3-2006	10V/m	perf. Criteria A
	EFT	IEC/EN61000-4-4/GB/T 17626.4-2008	±2kV 5/50ns 5kHz	perf. Criteria A
	Surge	IEC/EN61000-4-5/GB/T 17626.5-2008	line to line ±1KV (42Ω, 0.5μF)	perf. Criteria A
	CS	IEC/EN61000-4-6/GB/T 17626.6-2008	0.15MHz-80MHz 10 Vr.m.s	perf. Criteria A

Physical Characteristics

Case materials	Metal base + Plastic case in black with flame class UL94-V0
Heat sink	Dimension 61.0x57.9x27.7mm, weight 72g, Aluminum, anodized black
Cooling method	Conduction cooling or forced air cooling with fan
Weight	Standard 115g, with heatsink 192g

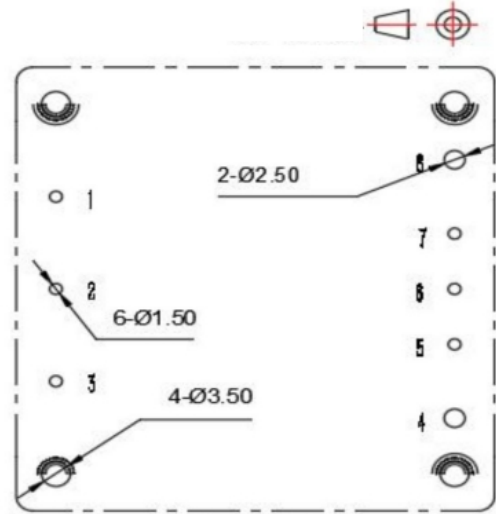
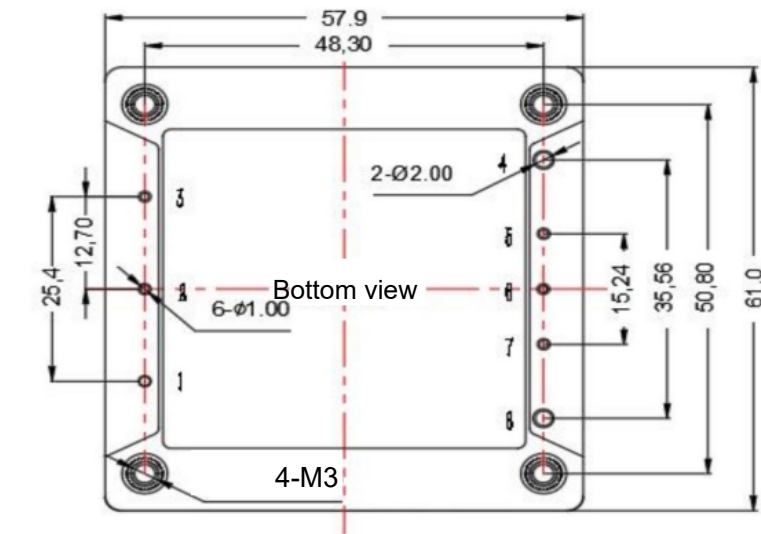
Product Characteristics Graphs



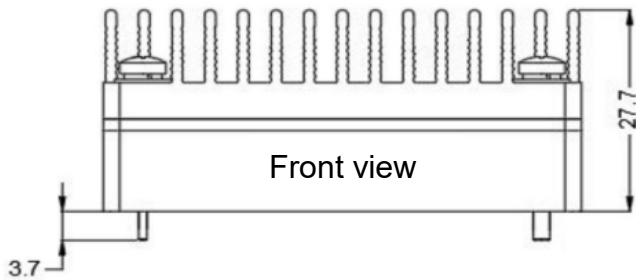
Note:

- Both the output power and efficiency in the graphs have been tested with the typical values.
- The data in temperature derating graph have been tested at Aipu laboratory test conditions. It is recommended to keep the temperature of the Metal base not more than 100 °C when the converter operates at the rated load for the application.

Mechanical Dimensions and Pin-out Function Description



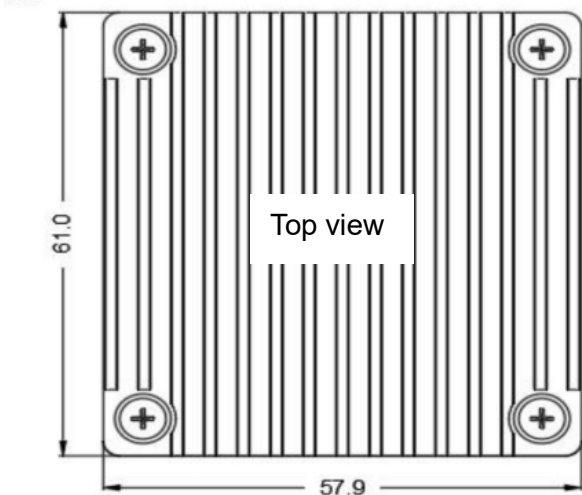
Recommended holes for PCB



Front view

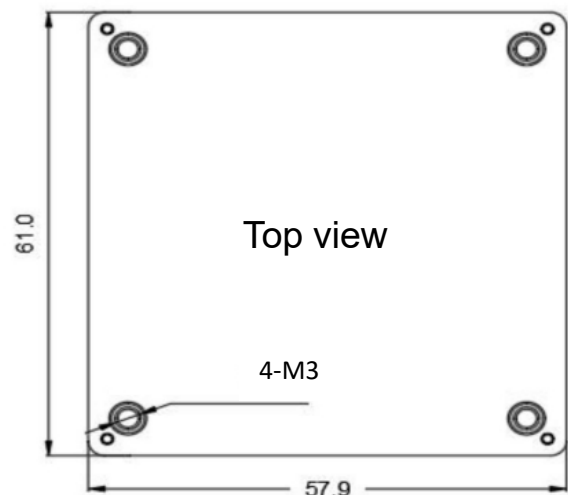


Front view



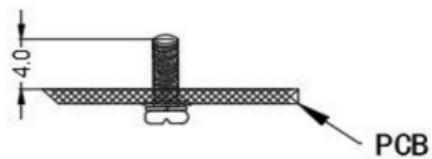
Top view

Standard+Heat sink
61.0×57.9×27.7mm



Top view

Standard
61.0×57.9×12.7mm



Note:

Unit: mm

Pin 1,2,3,5,6,7 diameter: 1.00mm

Pin 4,8 diameter: 2.00mm

Tolerance: X.X ±0.50mm, X.XX ±0.10mm

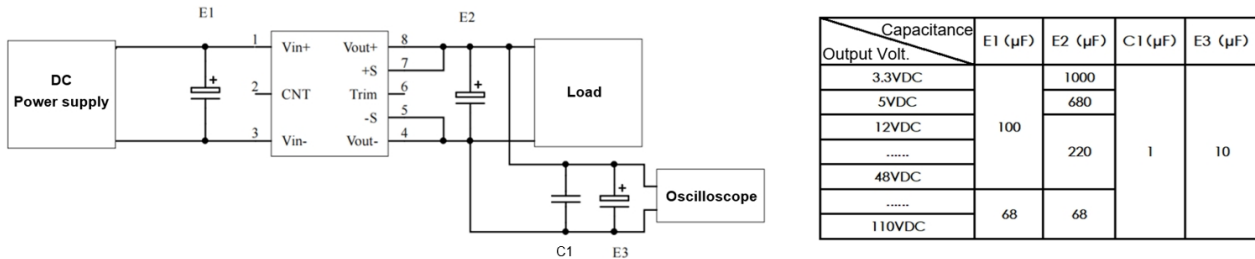
Screwing torque: 0.4N.m Max

Pin No.	1	2	3	4	5	6	7	8
Function	Vin+	CNT	Vin-	Vout-	-S	TRIM	+S	Vout+

Recommended circuits for application

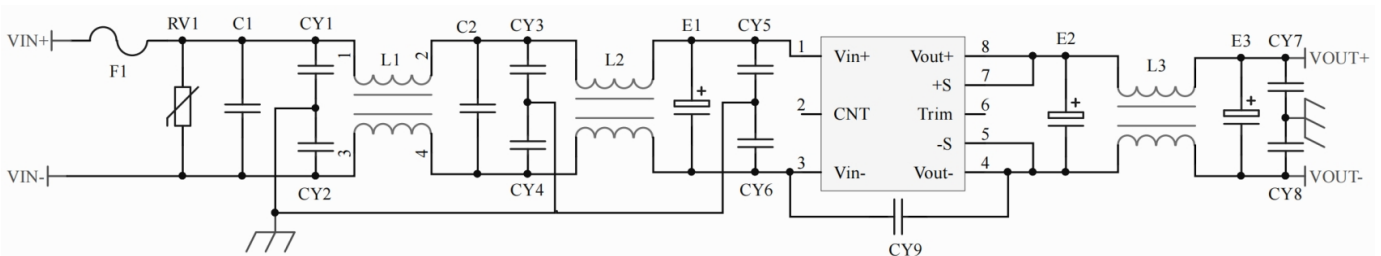
1. Ripple & Noise

All this series of products will be tested according to this circuit diagram below before shipping.



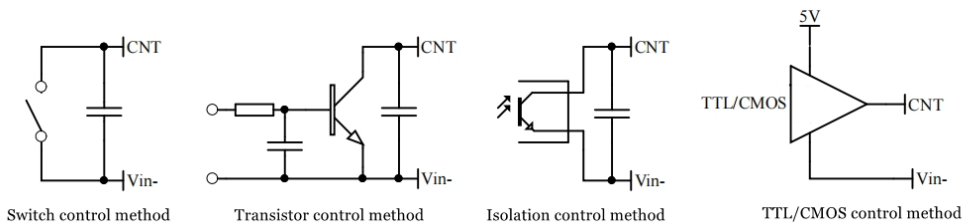
2. Recommended circuit for application

If this circuit diagram recommended below is not adopted, an electrolytic capacitor $\geq 100 \mu\text{F}$ should be used at the input to suppress the possible surge voltage.



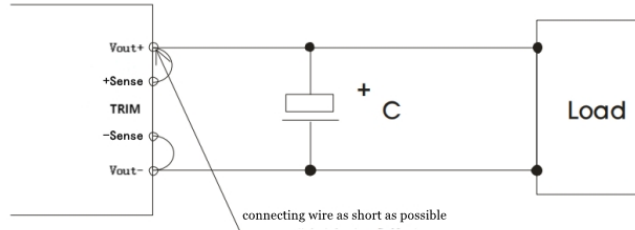
F1	T3.15A/250V FUSE
RV1	14D 560V Varistor
C1, C2	105/520V Polyester film capacitor
CY1, CY2, CY3, CY4, CY5, CY6	102/250Vac Y2 capacitor
CY7, CY8	103/2KV Ceramic capacitor
CY9	471/250Vac Y1 capacitor
E1	100μF/450V Electrolytic capacitor
E2, E3	470μF/25V Electrolytic capacitor
L1, L2	>8mH, temperature rise less than 25° @2A
L3	>100uH, temperature rise less than 25° @17A

3. Recommended circuit diagrams for the ON/OFF control (CNT)

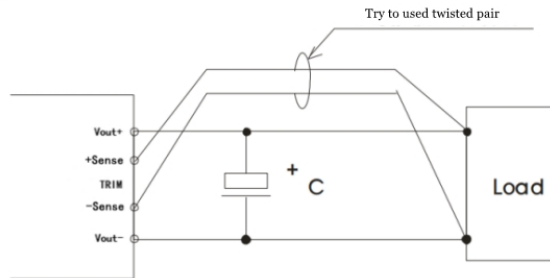


4. Application for Sense

1) With NO distal end compensation



- Note:
1. Vout+ & Sense+, Vout- & Sense- should be shorted when distal end compensation is not needed
 2. The lead wire between Vout+ and Sense+, Vout- and Sense- should be as short as possible, and close to the pins, or else the output may be unstable.
- 2) With distal end compensation



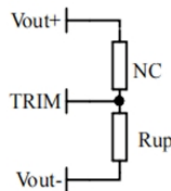
- Notes:
1. The output voltage may be unstable if the compensation cables are too long.
 2. The twisted pair or shielded cables are recommended, the cable length should be as short as possible.
 3. Wide copper path on PCB or thick lead wires between the power supply and the load should be used to achieve the line voltage drop <0.3V. The target is to keep output voltage within the specified range.
 4. The leads wire resistance may create the output voltage oscillation or larger ripples. Please verify it before to use.

5. Output voltage TRIM and calculation of TRIM resistance

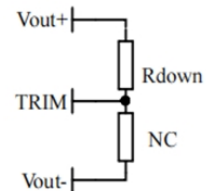
The calculation of ΔU and Rup & Rdown:

$$R_{up} = 37.5 / \Delta U - 5.1 \text{ (K}\Omega\text{)}$$

$$R_{down} = 15 * (15 - 2.5 - \Delta U) / \Delta U - 5.1 \text{ (K}\Omega\text{)}$$



Voltage-up: Add Rup between Trim and Vout-



Voltage-down: Add Rdown between Trim and Vout+

6. This product is not available to be connected in parallel to increase the output power. Please contact Aipu technician for this kind of requirement.

Others

1. The product warranty period is two years. The failed product can be repaired/replaced free of charge if it operates at normal condition. A paid service shall be also provided if the product fails after operating under wrong or unreasonable conditions.
2. Aipupower can provide customization design and filter modules for matching, please contact our technician for details.

Guangzhou Aipu Electron Technology Co., Ltd

Address: Building 4, HEDY Park, No.63, Punan Road, Huangpu Dist, Guangzhou, China.

Tel: 86-20-84206763 Fax: 86-20-84206762 HOTLINE: 400-889-8821

E-mail: sales@aipu-elec.com Website: <https://www.aipupower.com>